

Human-Machine Collaborative Inspection Through Mixed Reality

Presented by: Zaid Abbas Al-Sabbag

Research Seminar at EMI 2022
June 2, 2022

Co-authors: Chul Min Yeum, Sriram Narasimhan

Civil and Environmental Engineering

University of Waterloo



UNIVERSITY OF WATERLOO
FACULTY OF ENGINEERING



Computer **V**ision for
Smart **S**tructure

UCLA **SRILab**

Background

- Crumbling infrastructure is a major issue facing North American cities.
- 42% of US bridges were built 50 years ago.
- 7.5% are classified as structurally deficient by ASCE's 2021 report card.
- Risk to public must be mitigated through inspections/maintenance.



I-35W Mississippi River bridge collapse (*source: NPR*)

Visual Inspections

- Detect types of defects (spalling, cracks, corrosion, etc.).
- Measure their defects sizes (width, height, depth).
- Assign a rating to bridge according to inspection manual.



Current Visual Inspection Process

- Manual process for inspectors
- Use basic tools such as measuring tape.

Disadvantages:

- Inaccurate
- Expensive
- Time-consuming
- Inaccessible regions
- Dangerous



Vision-based Inspections

- Automated platforms: robots, drones.
- Use AI to automatically locate defects in images.
- Measure defect sizes using 3D sensors (LiDAR).

Problems

- Are vision-based systems always reliable?
- How to incorporate inspector expertise (human-in-loop)?
- How to perform real-time collaboration between inspector and vision-based systems?



Opportunity (Mixed Reality)

- **What is Mixed Reality (MR)?**
 - See through display: real world remains visible.
 - Visualize and interact with digital content over the real world (holograms) through wearable headset.

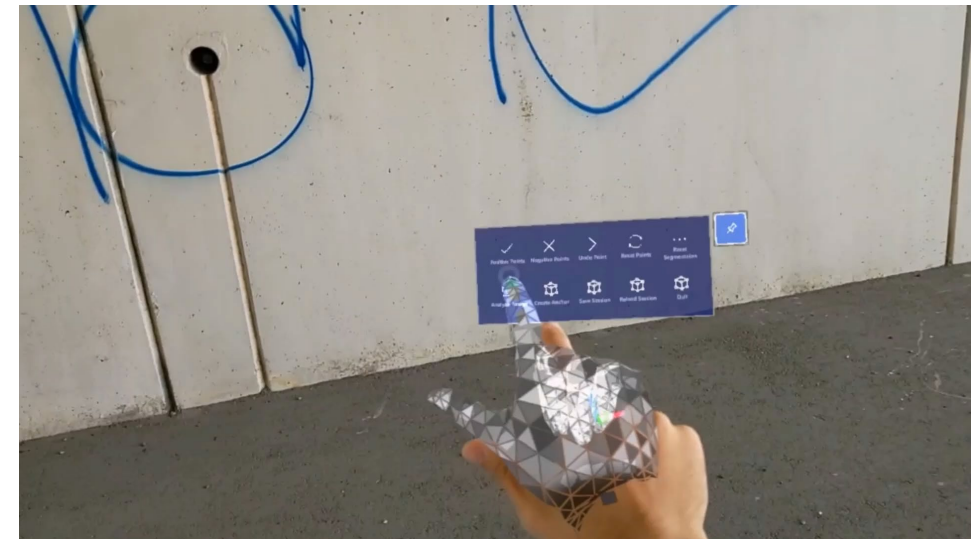
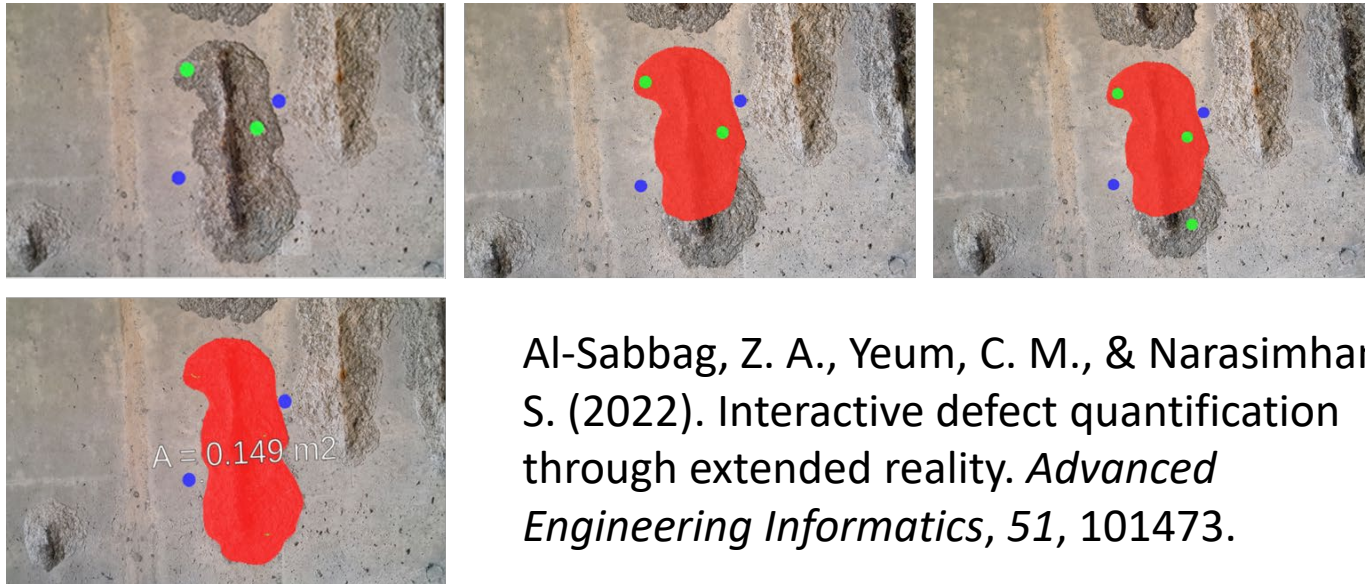


- **Microsoft HoloLens 2 (HL2)**
 - Head tracking
 - Hand gesture tracking
 - Spatial mapping
 - Voice commands



Previous Work: XRIV

- eXtended Reality Inspection and Visualization (XRIV).
- Localize and quantify defects.
- Interactive segmentation through MR.
- Limited Range: <5m.

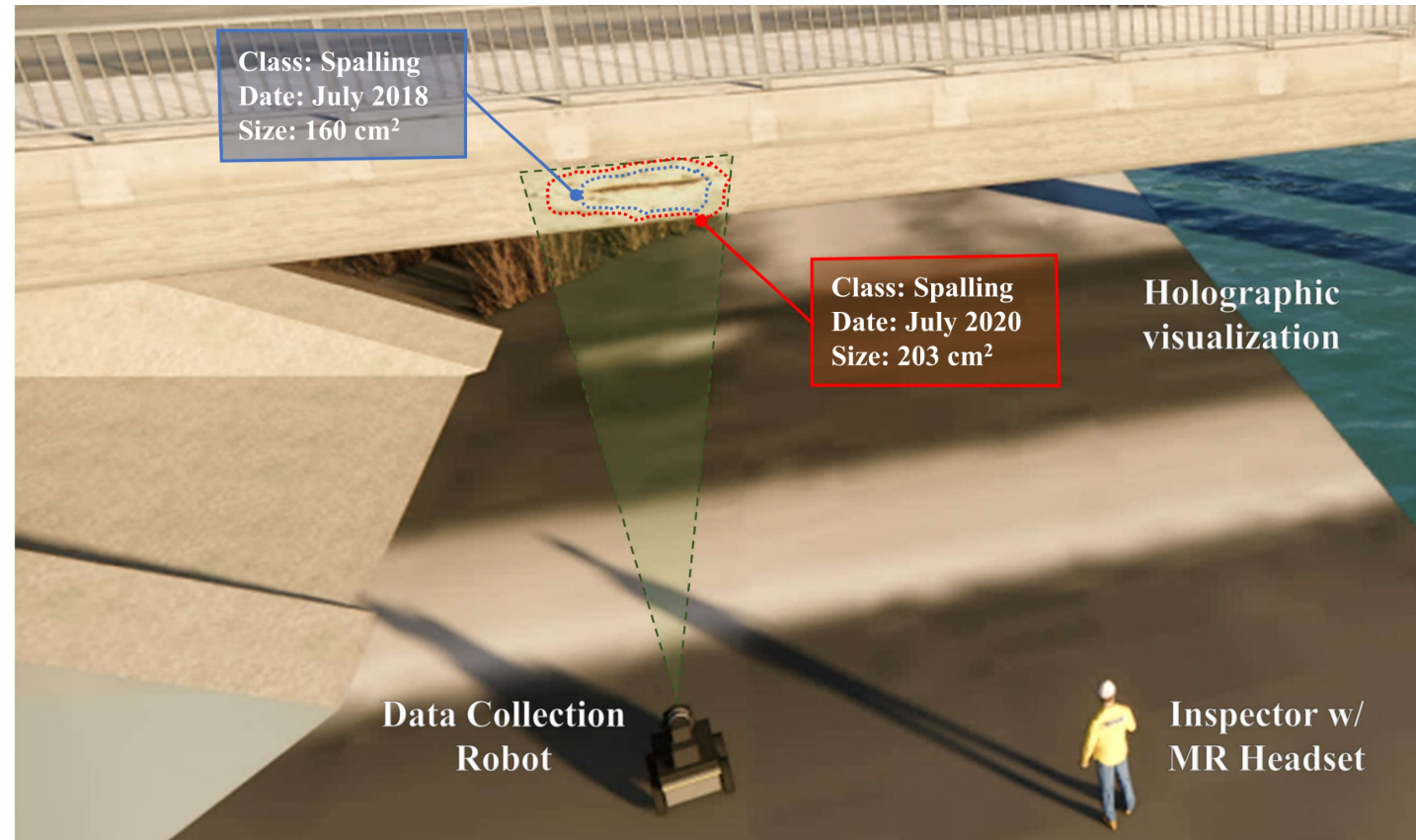


Objectives

1. Allow domain experts (inspectors, engineers) to use MR headsets to collaborate with robots during inspections.
2. Spatially align robot and MR headset in real-time using image-based localization.
3. Allow MR-equipped inspector to visualize defects located by robot and use interactive segmentation to refine damage region boundary.

Human-Machine Collaborative Inspection (HMCI)

- **Robot** scans bridge using cameras and LiDAR to build a 3D map.
- **Remote server** analyze images to locate defects using deep learning.
- **Inspector** visualizes defect region on the real structure using MR.
- Inspector can re-visit structure and compare changes of defect region size over time.



HMCI System Overview

- **Robot:**

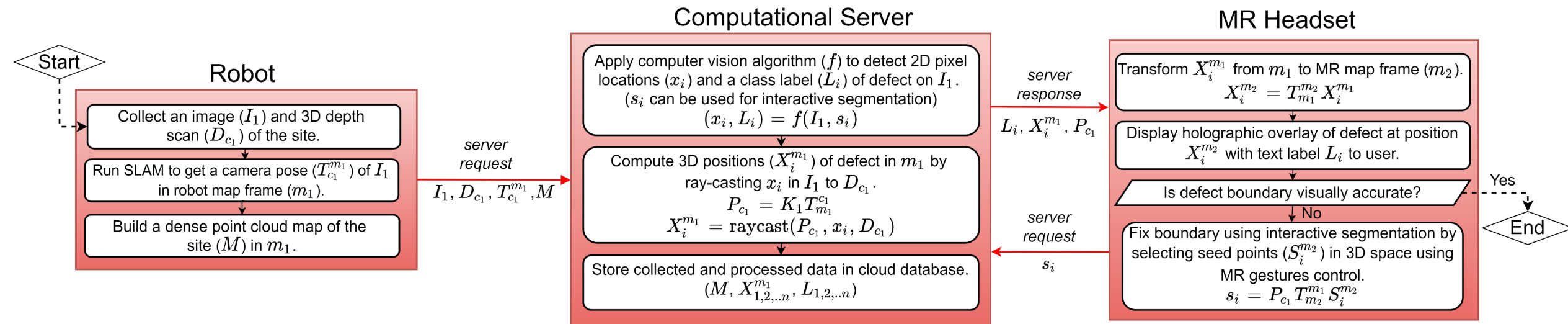
- Capture images + lidar scans of site
- Run visual-lidar SLAM to track pose and build 3D map

- **Server:**

- Offloads heavy computations
- Analyse image to locate defects
- Use 3D map to quantify defects
- Store result in database

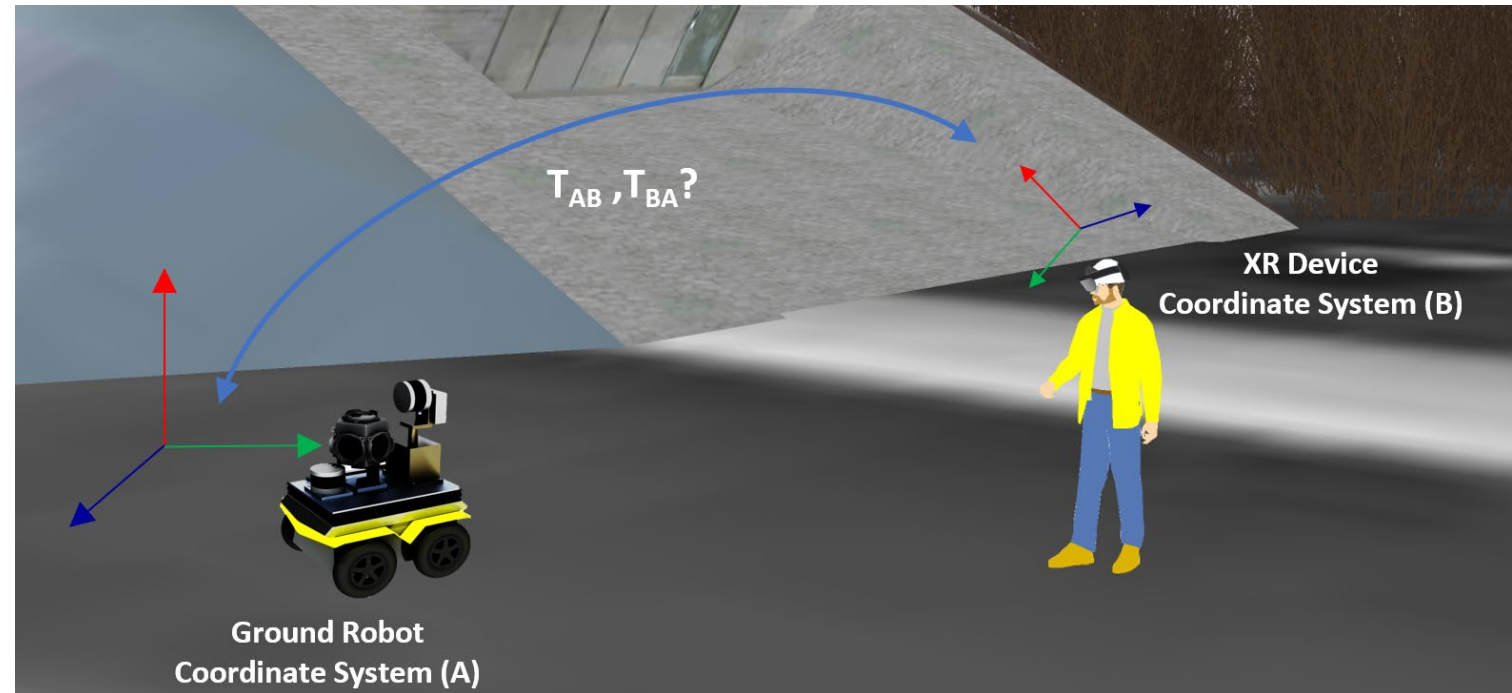
- **MR headset:**

- Visualize defect boundary
- Use interactive segmentation to refine boundary (iterative process).



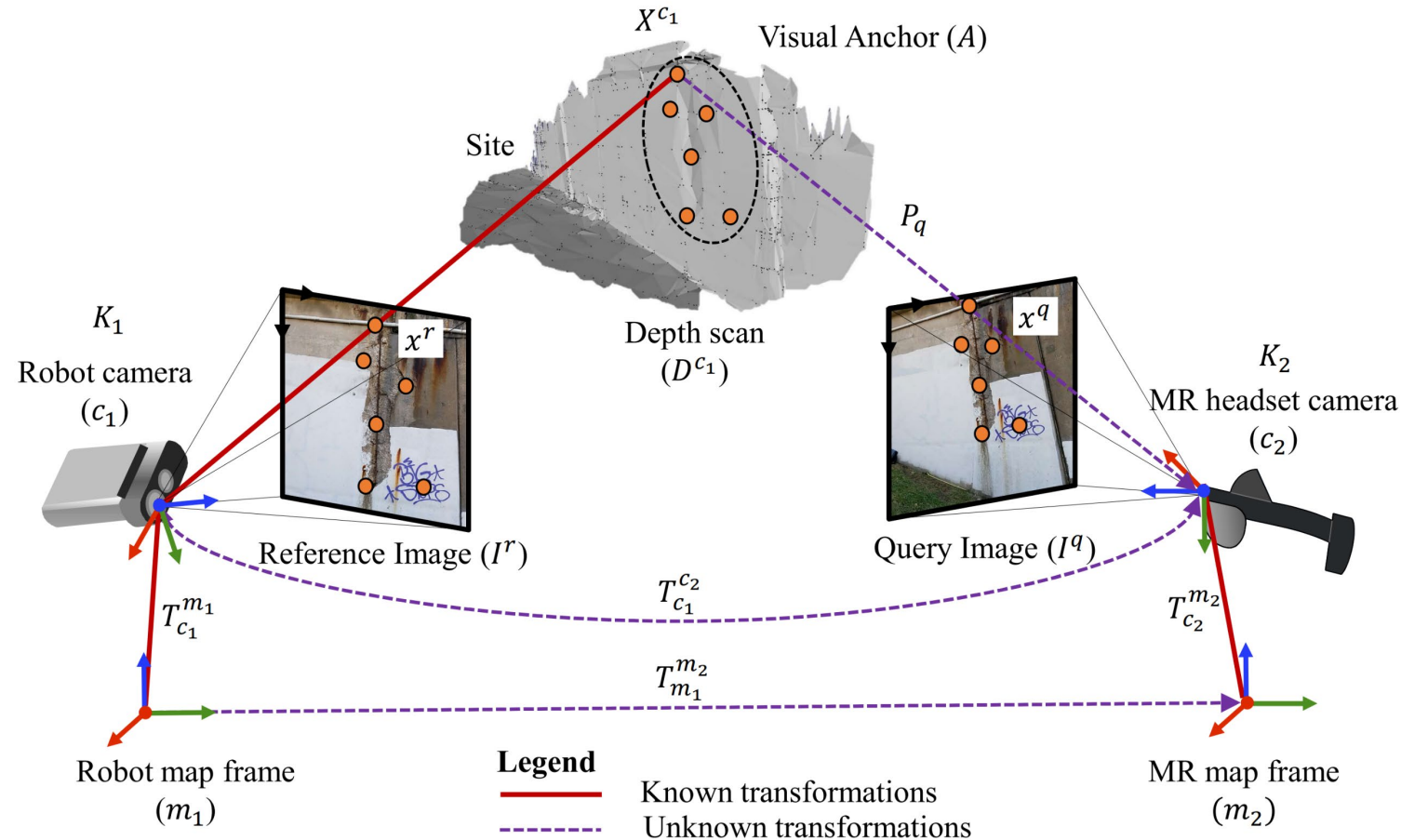
Spatial Alignment between Robots and Inspectors

- How to align coordinate origins of MR headset and robot?
- **Image-based localization:** Utilize natural visual features in the scene from images from robot and MR headset cameras to calculate relative pose.



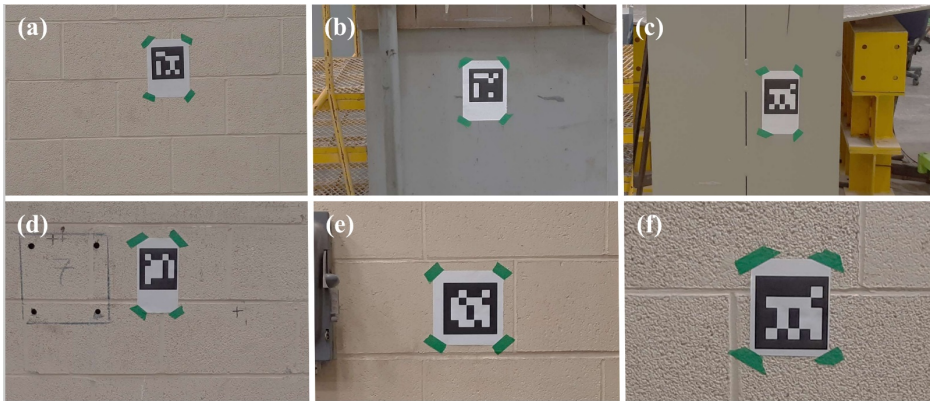
Single-shot Localization for Spatial Alignment

- **Single-Shot Localization:** real-time image-based localization.
- Robot and MR headset capture one image each of scene.
- Use feature detection + matching to find common features.
- Project 2D features to 3D scene using lidar scans from robot.
- Estimate relative pose of MR headset to robot using Perspective-n-Point (PnP) and Random sample consensus (RANSAC).



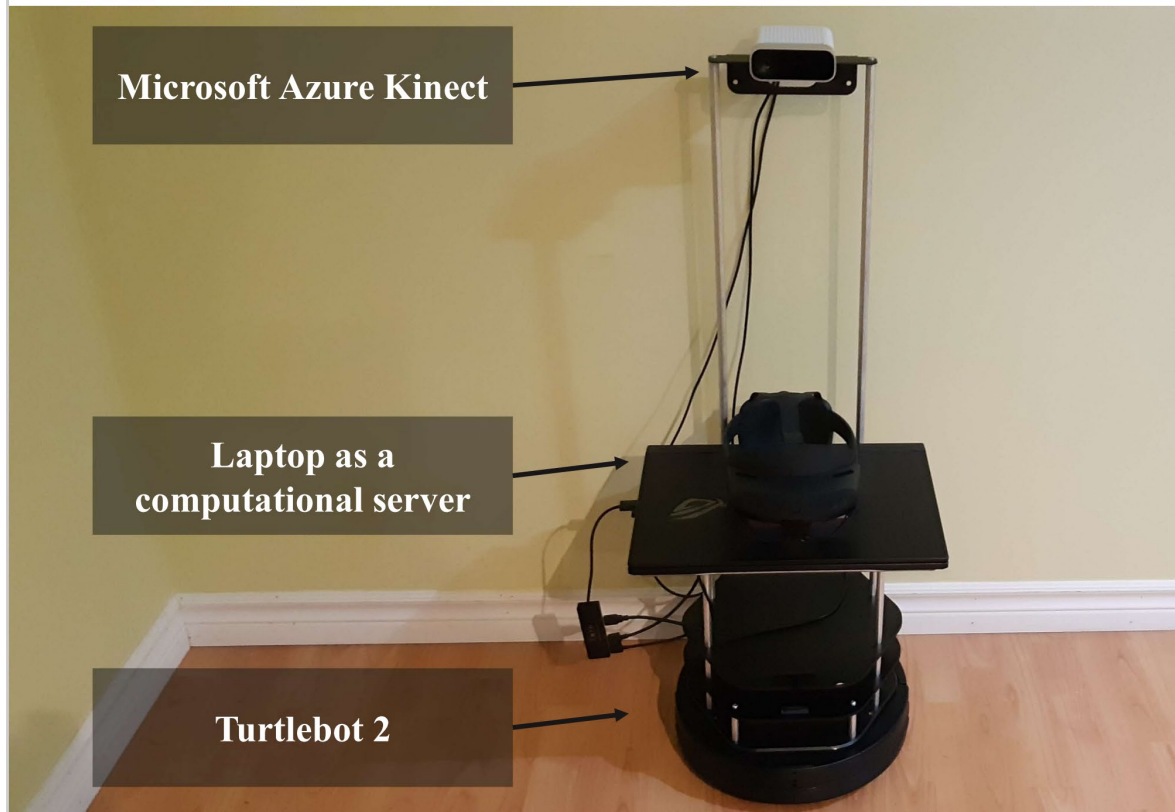
Experiment

- Use Aruco markers to simulate structural defects.
- Robot automatically scans site to locate structural defects.
- Visualize defects to MR user.

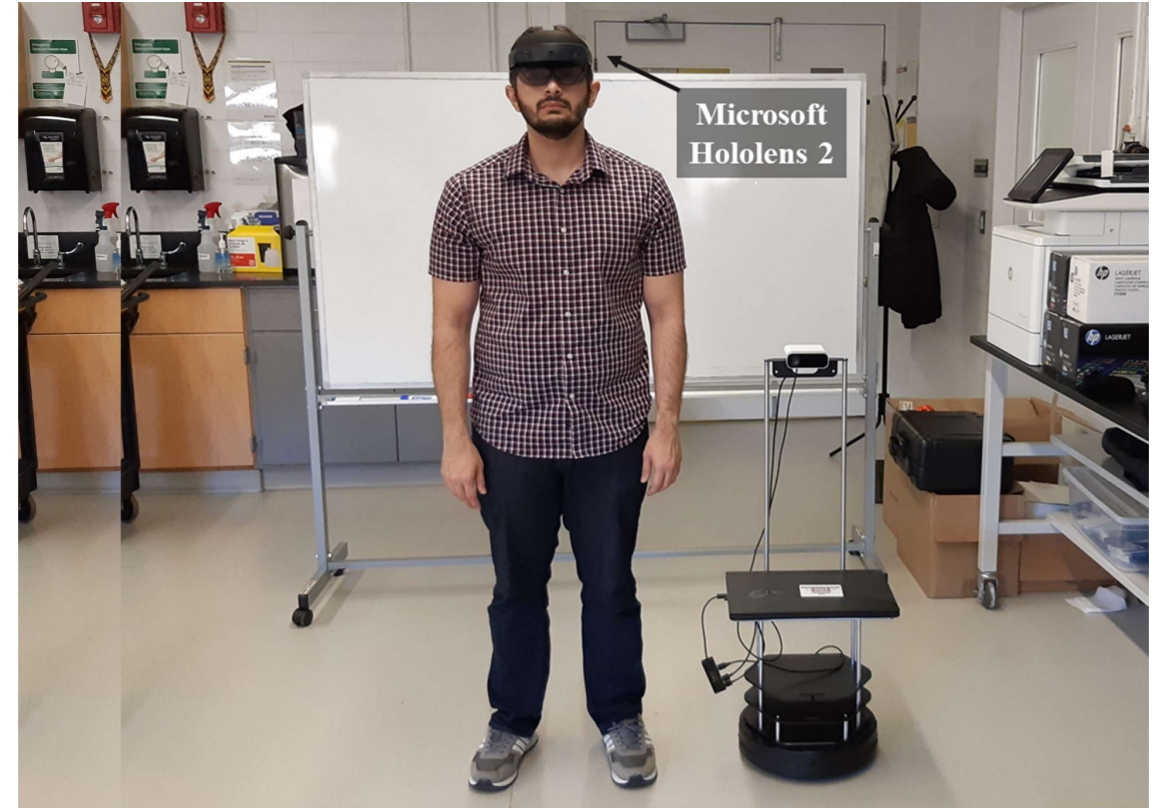


Experiment hardware

Robot



MR-equipped user

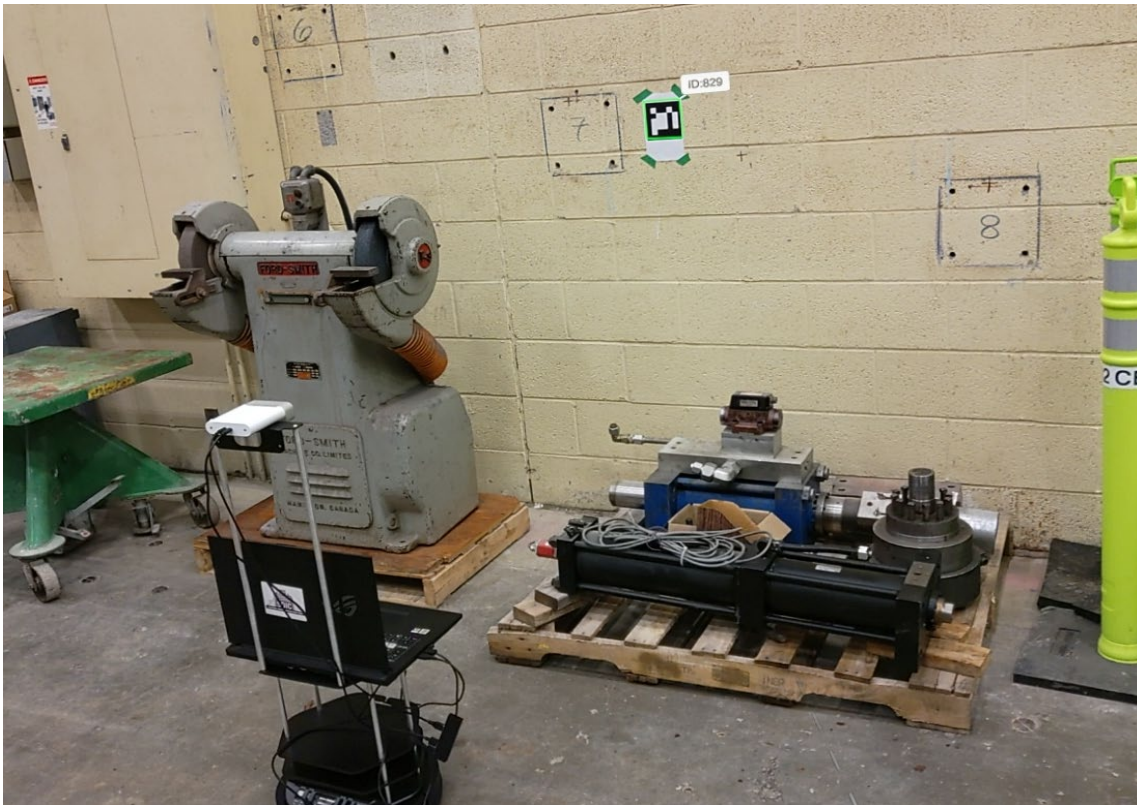


Video Demonstration



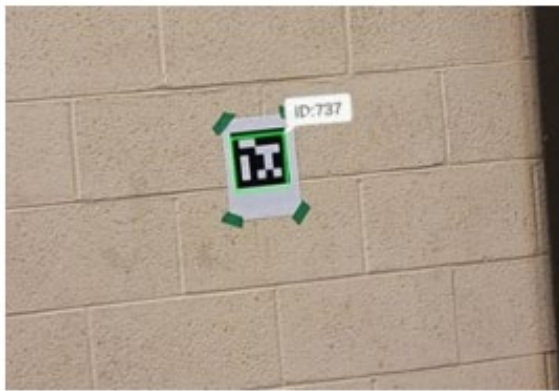
Visualization of Defects ROIs

- After robot captures defect, it is visualized to MR user as Region-of-Interest (ROI) bounding box.
- User can then interact with bounding box and fix potential errors through hand gestures.



Evaluation of ROI Localization Errors

- We evaluated the spatial alignment error between robot and MR headset by measuring marker offset from detected ROI.
- Measured error when using SuperPoint (feature detector) +SuperGlue (feature matcher):
- **Mean Error \pm std. dev = 1.11 ± 0.91 cm (30 samples)**



(a)



(b)



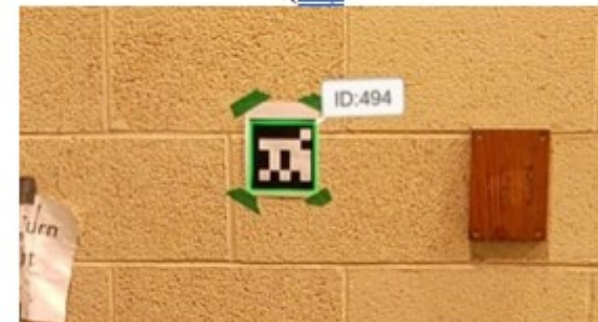
(c)



(d)



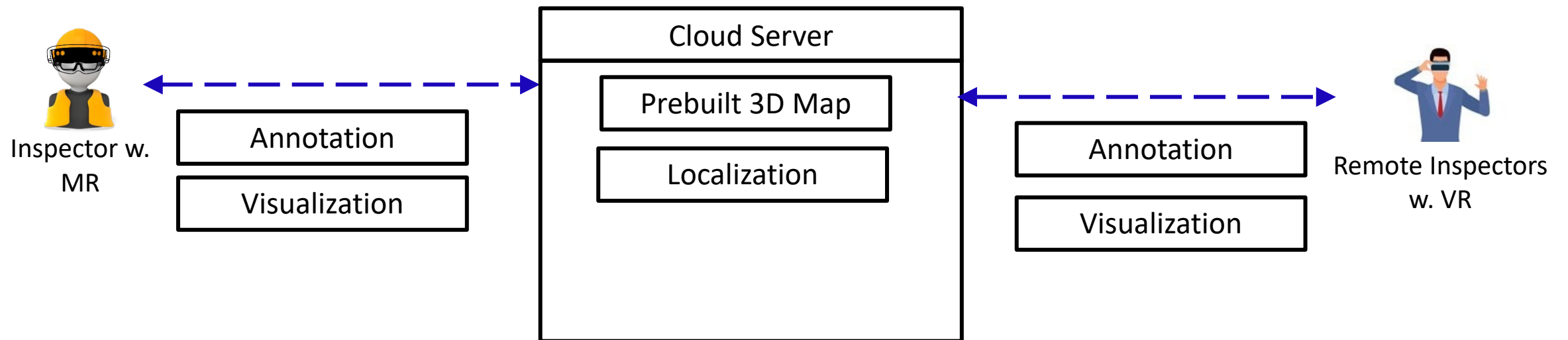
(e)



(f)

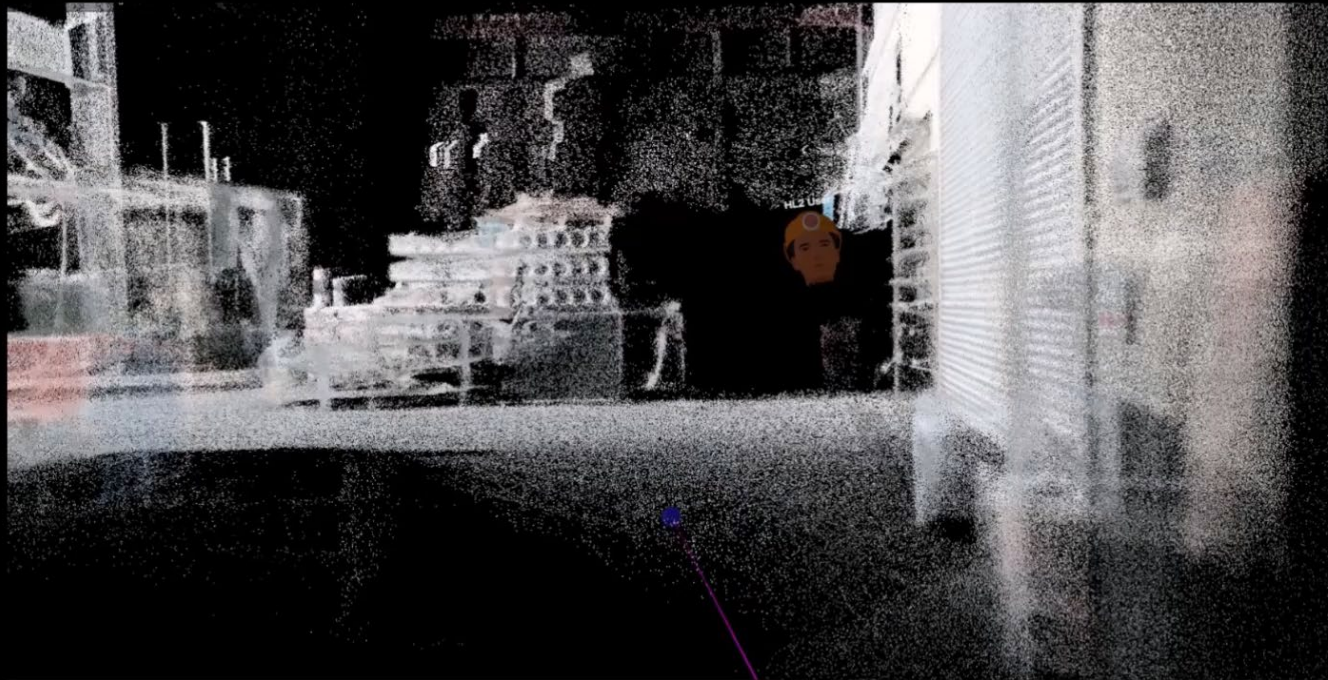
Ongoing Work: MR-VR Collaboration

- Allow on-site inspectors (MR) and off-site inspectors (VR) to **collaborate remotely** with each other on a prebuilt 3D map to annotate defects in real-time.
- MR inspectors are localized to 3D map using Single-Shot Localization to spatially align MR headset with 3D map.



Video Demonstration: MR-VR Collaboration

On-site and off-site inspectors can interact with each other and visualize each other's annotations





Computer Vision for
Smart Structure

UCLA

SRILab



Computer Vision for Smart Structure Lab

39 subscribers

SUBSCRIBED



HOME

VIDEOS

PLAYLISTS

CHANNELS

ABOUT



Uploads ▶ PLAY ALL



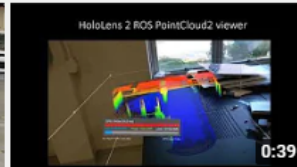
Virtual Reality Point Cloud Viewer

83 views • 3 months ago



Distributed Collaborative Infrastructure Assessment

83 views • 4 months ago



HoloLens 2 ROS PointCloud2 viewer

413 views • 6 months ago



Robotic Civil Inspection - Gazebo Demo

207 views • 7 months ago



Interactive Defect Segmentation Using XR (1st...

398 views • 7 months ago

<https://cviss.net>



Thank You!
Questions?